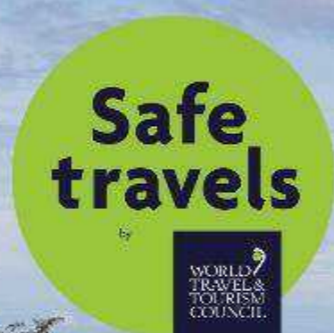


# FOUR POINTS BY SHERATON

Phuket  
Patong Beach Resort

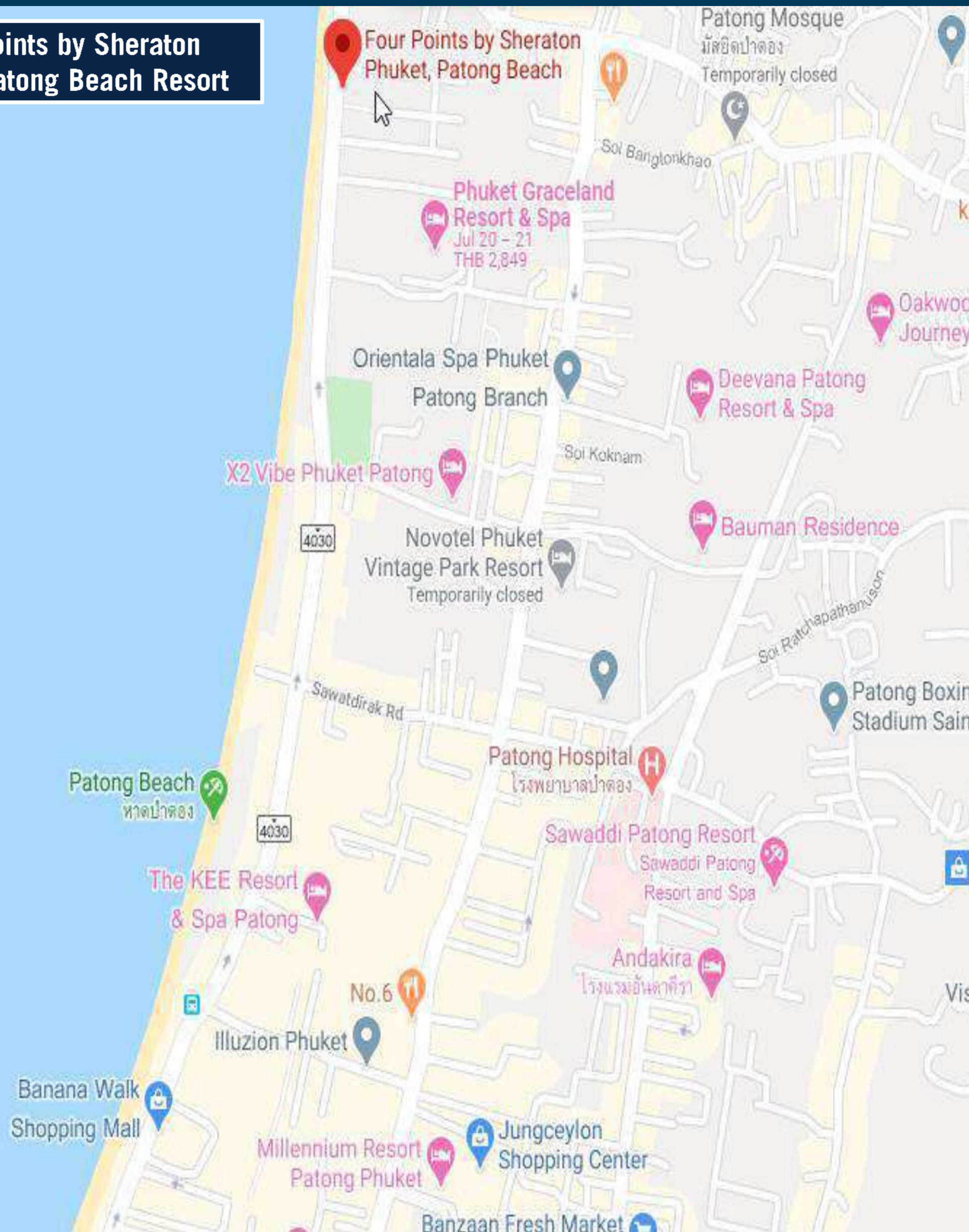


FOUR POINTS  
BY SHERATON

Phuket  
Patong Beach Resort

# HOTEL LOCATION

Four Points by Sheraton  
Phuket Patong Beach Resort



# HOTEL OVERVIEW



## Four Points by Sheraton Phuket Patong Beach Resort

is located just right at the Beachfront of Patong Beach – Great location with very easy access to leisure and entertainment district.

The Resort consist of;

- Total 600 rooms including Suites
- 5 Food & Beverage outlets
- 2 swimming pools
- 1,200 sqm. of meeting space
- 1,000 sqm of outdoor event space

## Four Points by Sheraton Phuket Patong Beach Resort,

we are...

- 45 minutes from Phuket International Airport
- 15 minutes to Phuket FantaSea
- 5 minutes to Jungceylon Shopping Centre
- 6 minutes to Central Patong Shopping Mall
- 29 minutes to Old Town Phuket
- 37 minutes to Promthep Cape
- 30 minutes to Rassada pier to Phi Phi island



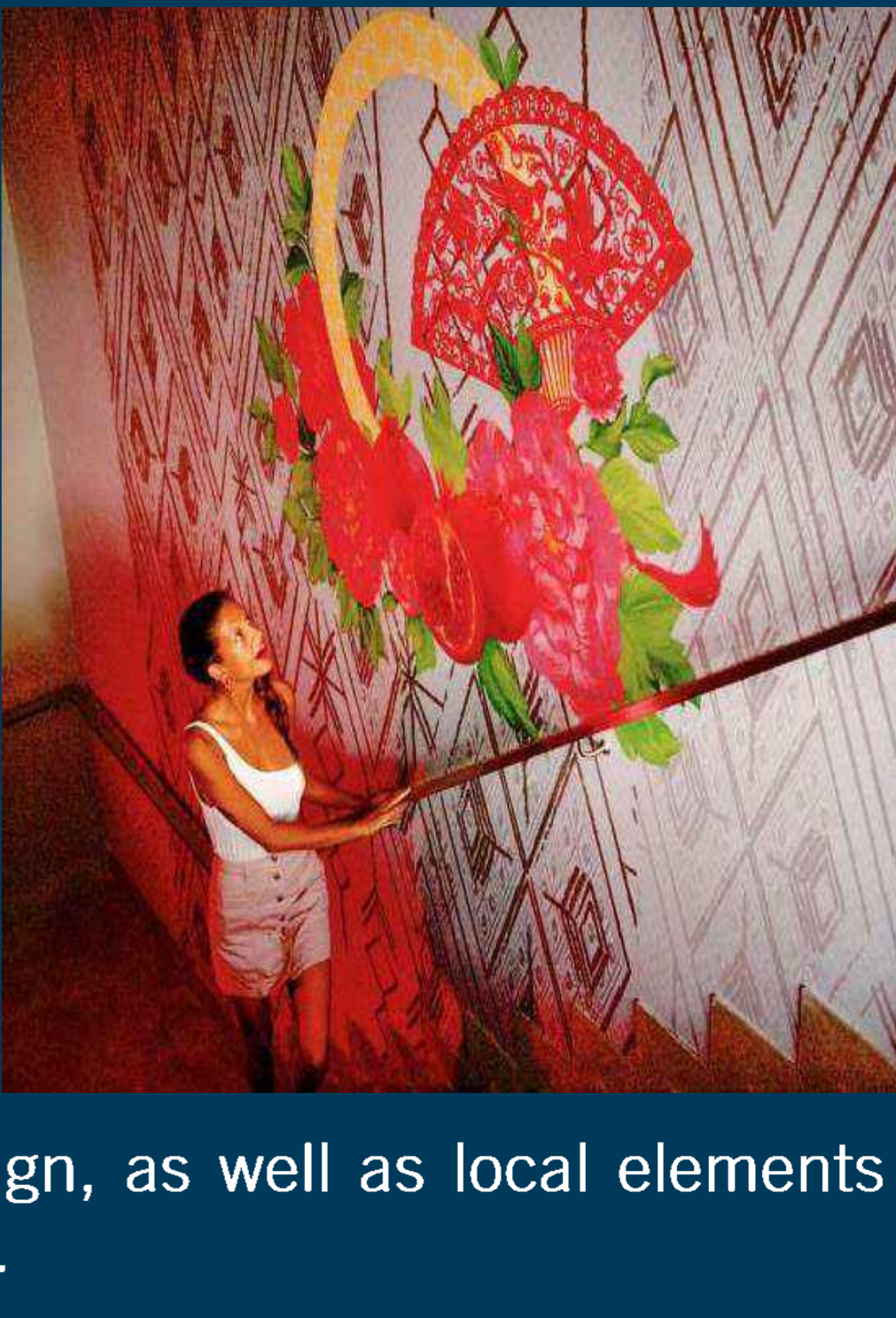
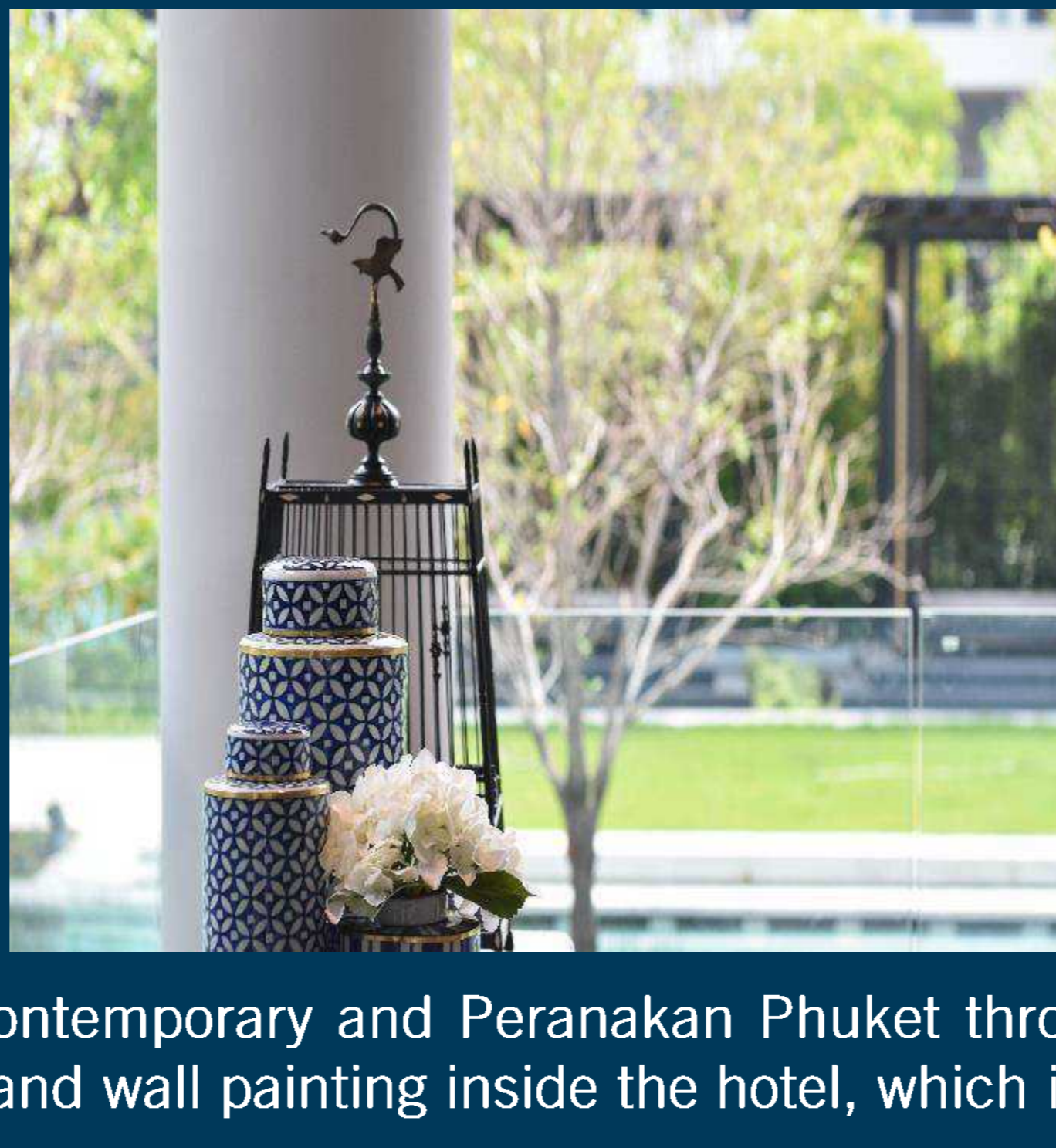
## Ground Floor

- |                  |                      |                                |
|------------------|----------------------|--------------------------------|
| 1. Entrance Area | 6. The Lawn          | 11. Gym                        |
| 2. Lobby         | 7. Pavilions         | 12. Sears & Co.                |
| 3. Lobby Bar     | 8. Kid's Pool        | 13. Little Sea Gypsy Kids Club |
| 4. Pool Bar      | 9. Sunbed Deck       | 14. Infinity Pool              |
| 5. Swimming Pool | 10. Chao Leh Kitchen | 15. The Deck Beach Club Patong |

## Second Floor

- |  |
|--|
| 16. The Sunset Deck - Rooftop                              |
| 17. KATHU Junior Ballroom                                  |
| 18. AKARA Grand Ballroom – Convention Hall with Ocean View |

# HOTEL INTERIOR – MODERN BUT CLASSIC



A perfect blend of contemporary and Peranakan Phuket through Sino-Portuguese design, as well as local elements through decorations and wall painting inside the hotel, which is the hotel unique identity.



LOBBY

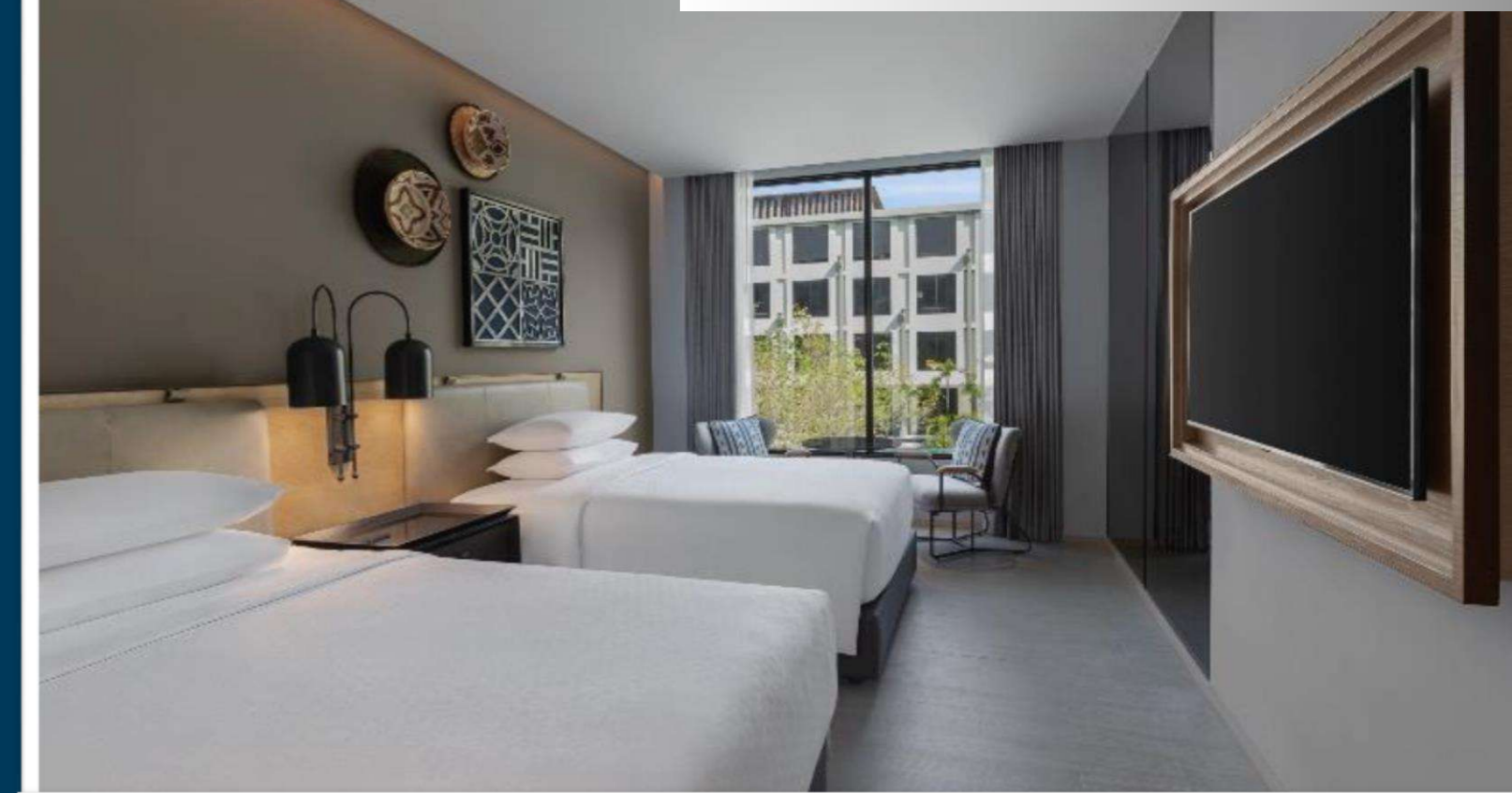
# GUESTROOMS

ROOM TYPES	ROOM INVENTORY
Superior – King Bed	318
Superior – Twin Bed (2 Double beds)	185
Deluxe Balcony – King Bed	13
Deluxe Balcony – Twin Bed (2 Double beds)	8
Deluxe Ocean View – King Bed	12
Deluxe Ocean View – Twin Bed (2 Double beds)	6
Pool Access – King Bed	26
Pool Access – Twin Bed (2 Double beds)	4
One Bedroom Suite	13
One Bedroom Suite – Pool Access	2
Family Suite (One Bedroom Suite + Kids room)	10
Ocean View Suite – Balcony	3

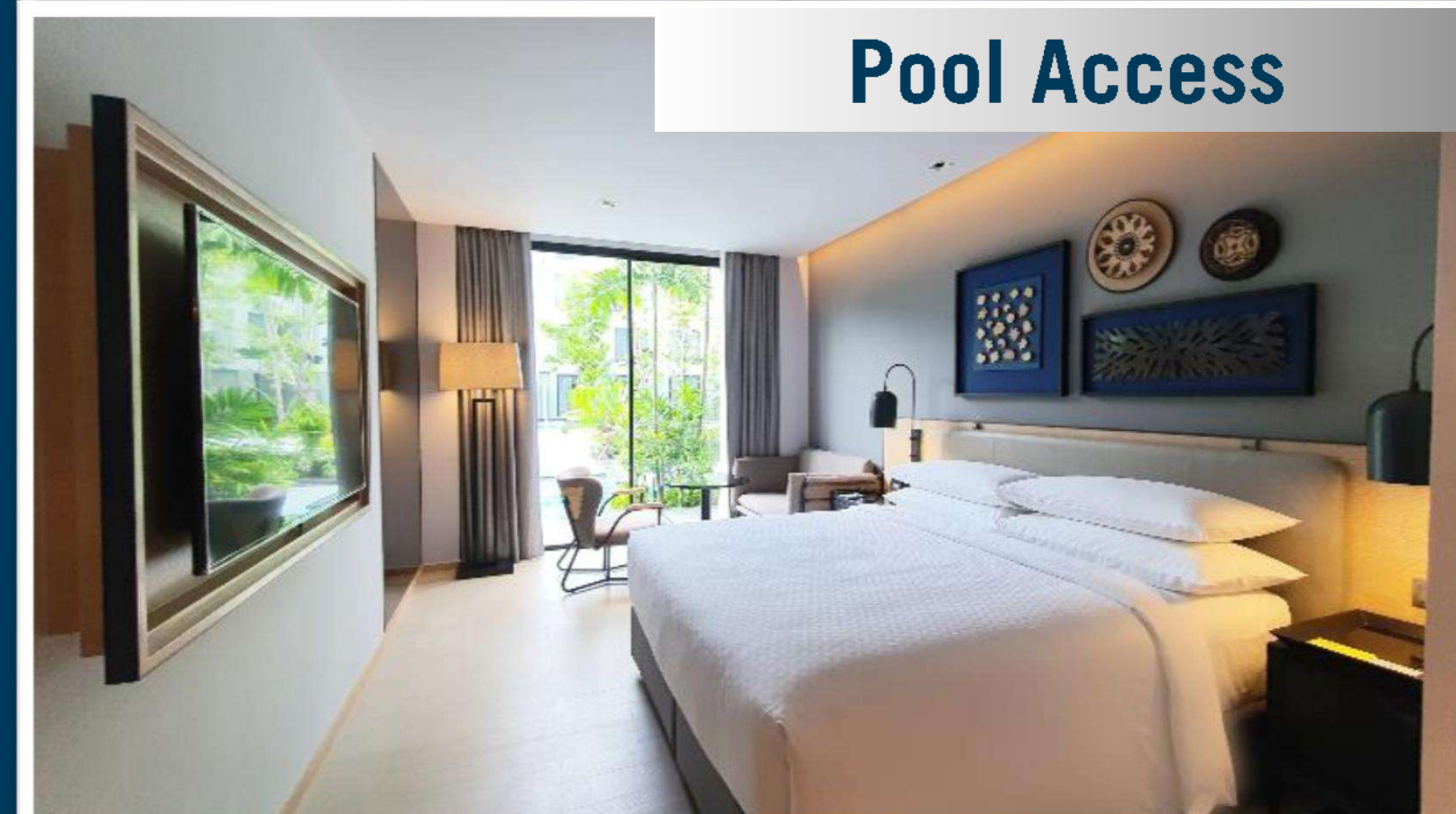
## Total 600 units

- 503 Lead – in Category Rooms
- 39 Deluxe Room
- 30 Pool Access Rooms
- 18 Suites
- 10 Family Suite
- 397 King rooms
- 203 Twin Beds rooms
- 65 Connecting Rooms

Superior King



Pool Access



Family Suite Kids Room



# GUESTROOMS-FLOOR PLAN

**Superior King**



**Superior Twin**



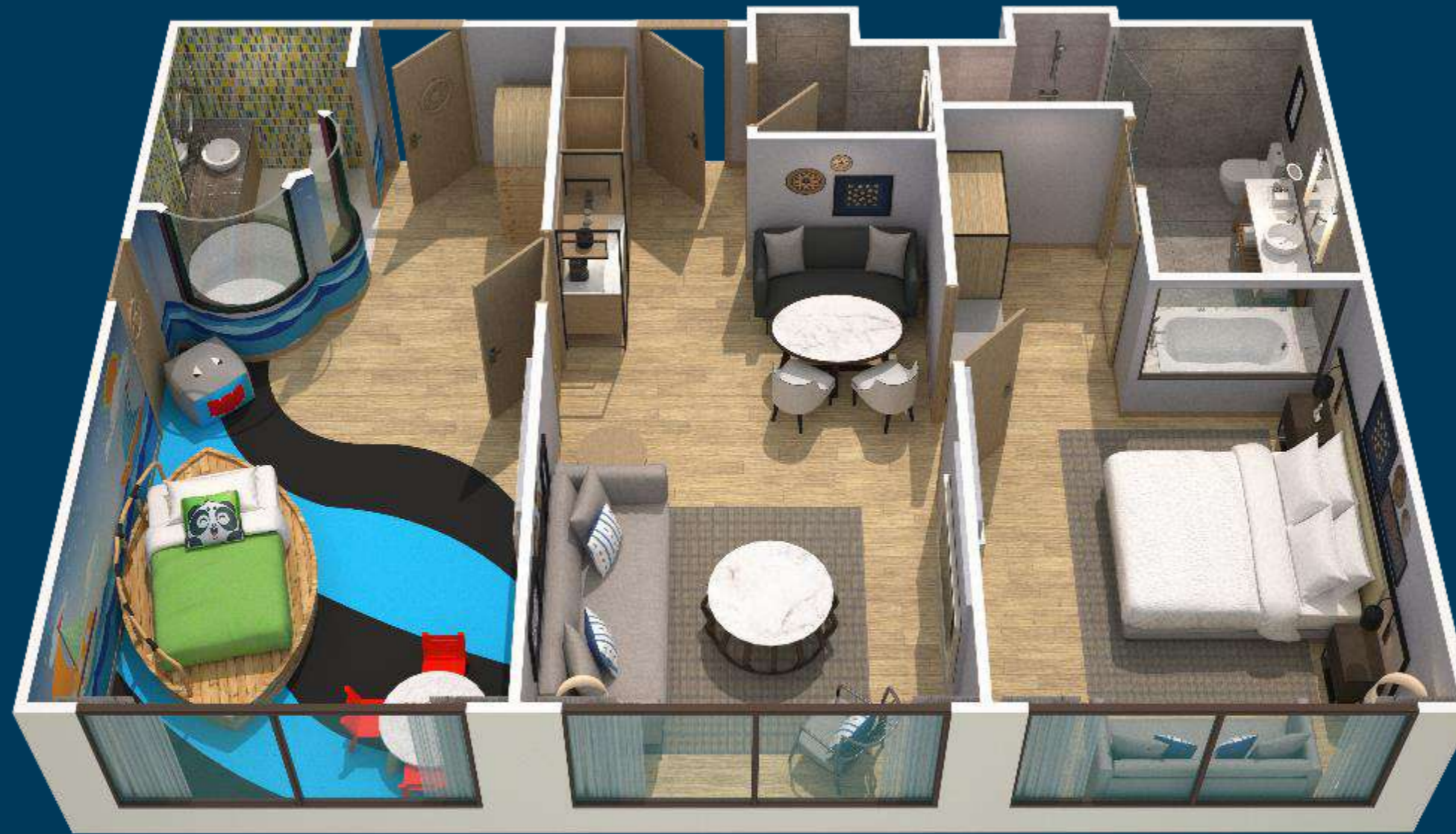
**Pool Access**



**One Bedroom Suite**



**Family Suite**



**Ocean View Suite**







## MEETING SPACES

Four Points by Sheraton Phuket Patong Beach Resort provides a unique experience for groups and business meetings in one of Thailand's most exotic destinations.

- 1,200 sqm of meeting space (9 function rooms)
- 1 Ocean View Akara Grand Ballroom (500 sqm)
  - 1 Junior Kathu Junior Ballroom (180 sqm)
  - 7 Extra Breakout Rooms

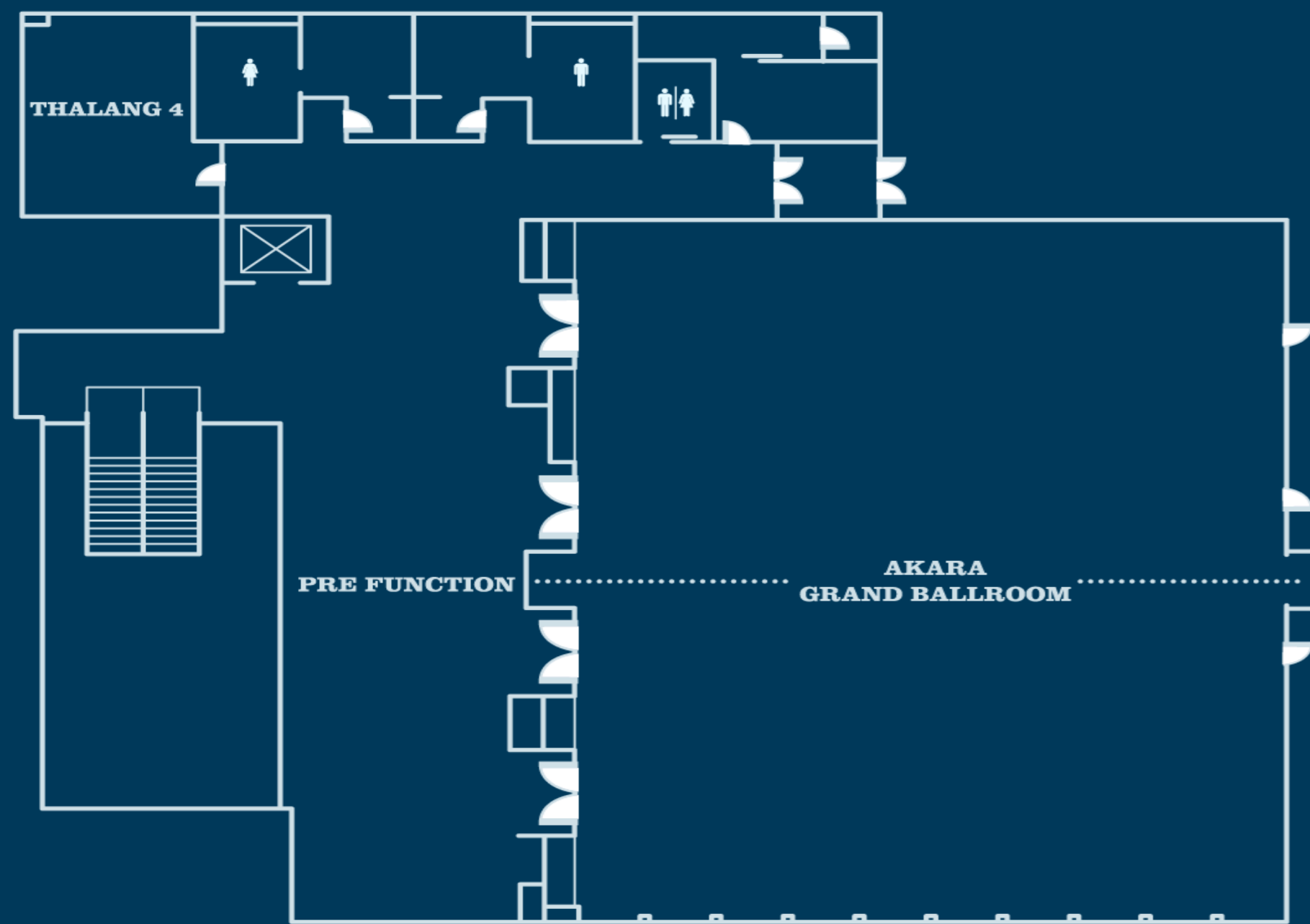
- Over 1,000 sqm of outdoor event space
- The Sunset Deck (513sqm)
  - The Garden Terrace (421sqm)
  - The Lawn (78sqm)
  - The Deck Beach Club Patong

# CAPACITY CHART

	AREA (SQM)	W x L x H (METERS)	COCKTAILS	THEATRE	CLASSROOM	BANQ. (10-SEAT)	CLUSTER OF 6	CLUSTER OF 8	U-SHAPE	BOARDROOM
AKARA GRAND BALLROOM	468.5	19.77 x 23.7 x 6	400	500	250	300	210	280	150	150
AKARA GRAND FOYER	84	-	80	-	-	-	-	-	-	-
AKARA A	238.2	19.77 x 12.05 x 6	200	250	120	150	105	140	72	72
AKARA B	230.3	19.77 x 11.65 x 6	200	250	120	150	105	140	72	72
PRE - FUNCTION SPACE	223	14.4 x 15.5	200	-	-	-	-	-	-	-
THALANG 1	98.3	12.5 x 7.8 x 4.5	60	60	36	50	60	80	24	24
THALANG 2	58	6.5 x 8.9 x 4.5	30	50	24	30	30	40	16	16
THALANG 3	54	6 x 8.9 x 4.5	30	50	24	30	30	40	16	16
THALANG 4	32.4	4.7 x 6.9 x 4.5	20	25	9	10	6	8	12	12
THALANG 1+2+3	216.4	12.5 x 16.7 x 4.5	120	180	84	120	90	120	56	56
THALANG 2+3	118	12.5 x 8.9 x 4.5	60	100	48	60	36	48	32	32
KATHU JUNIOR BALLROOM	179.2	14 x 12.8 x 3.5	100	120	72	90	48	64	42	24
KATHU JUNIOR BALLROOM FOYER	296	38.5 x 3.8	150	-	-	-	-	-	-	-
THALANG 5	87	6.8 x 12.8 x 3.5	40	50	36	40	24	32	32	30
THALANG 6	87	6.8 x 12.8 x 3.5	40	50	36	40	24	32	32	30
THALANG 7	39	6.8 x 5.7 x 3.5	15	20	12	10	12	16	12	10
THE GARDEN TERRACE	254	26 x 18.3	150	120	-	90	54	72	-	-
THE SUNSET DECK	513.2	-	300	250	-	180	-	-	-	-
GRASS LAWN	78	-	40	-	-	30	-	-	-	-

# SOCIAL DISTANCING CAPACITY CHART

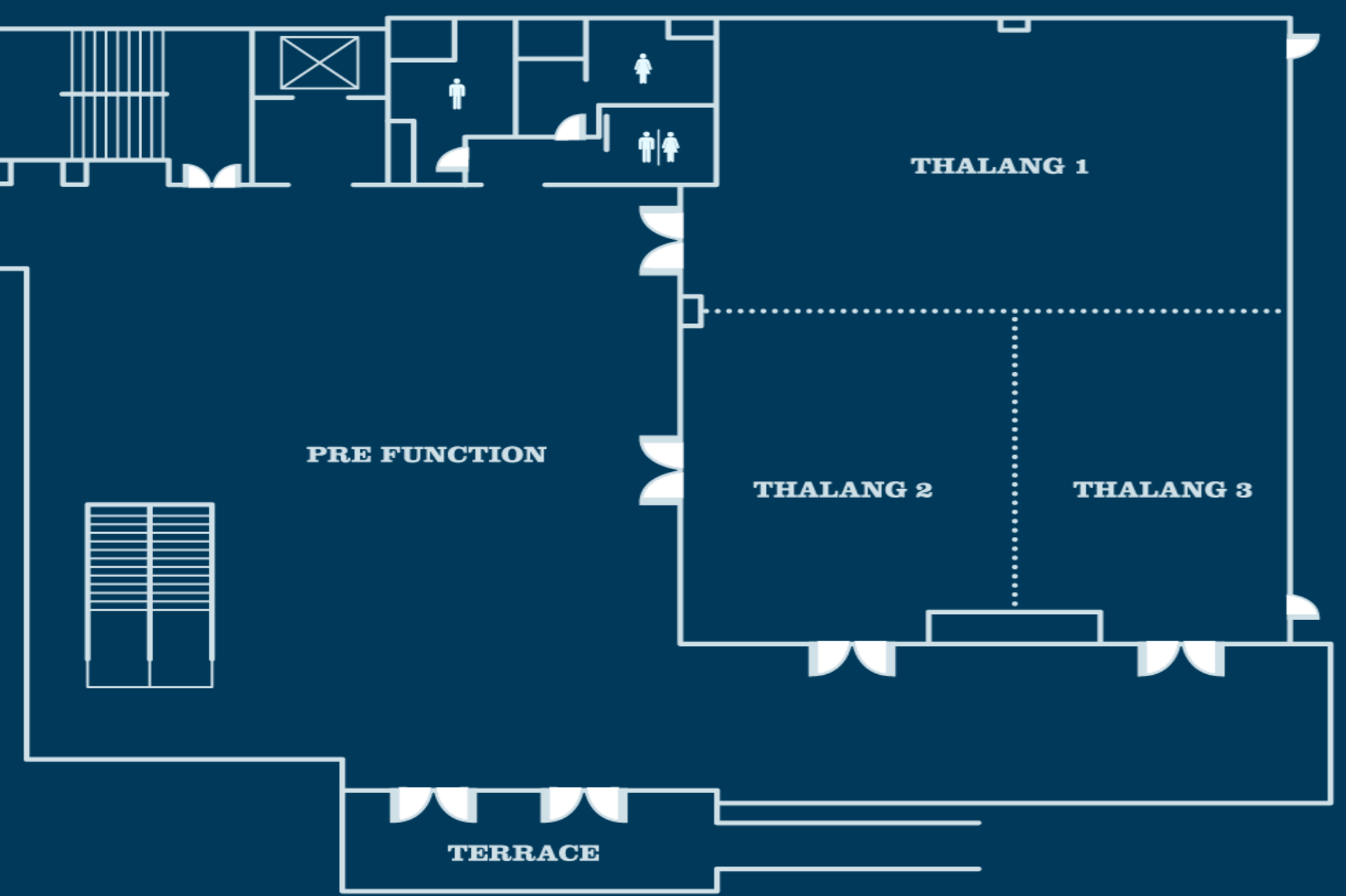
SPACE	AREA (SQM)	H(METERS)	COCKTAILS	THEATRE	CLASSROOM	BANQ. OF (4 PAX)	BANQ. OF (6 PAX)	U-SHAPE	BOARDROOM
AKARA GRAND BALLROOM	468.5	19.77 x 23.7 x 6	200	130	100	120	180	50	50
AKARA GRAND FOYER	84	-	40	-	-	-	-	-	-
AKARA A	238.2	19.77 x 12.05 x 6	50	60	40	60	90	24	24
AKARA B	230.3	19.77 x 11.65 x 6	50	60	40	60	90	24	24
PRE - FUNCTION SPACE	223	14.4 x 15.5	100	-	-	-	-	-	-
THALANG 1	98.3	12.5 x 7.8 x 4.5	30	18	25	20	36	10	10
THALANG 2	58	6.5 x 8.9 x 4.5	20	10	16	12	18	6	6
THALANG 3	54	6 x 8.9 x 4.5	20	10	16	12	18	6	6
THALANG 4	32.4	4.7 x 6.9 x 4.5	15	10	10	4	6	5	5
THALANG 1+2+3	216.4	12.5 x 16.7 x 4.5	70	38	58	48	72	20	20
THALANG 2+3	118	12.5 x 8.9 x 4.5	30	20	32	24	36	12	12
KATHU JUNIOR BALLROOM	179.2	14 x 12.8 x 3.5	50	40	48	36	54	14	14
KATHU JUNIOR BALLROOM FOYER	296	38.5 x 3.8	70	-	-	-	-	-	-
THALANG 5	87	6.8 x 12.8 x 3.5	20	15	12	12	18	12	12
THALANG 6	87	6.8 x 12.8 x 3.5	20	15	12	12	18	12	12
THALANG 7	39	6.8 x 5.7 x 3.5	6	10	5	8	12	5	5
THE GARDEN TERRACE	254	26 x 18.3	80	60	-	36	54	-	-
THE SUNSET DECK	513.2	-	100	90	-	60	90	-	-
GRASS LAWN	78	-	30	-	-	12	-	-	-



**2<sup>nd</sup> Floor - AKARA Grand Ballroom and Thalang 4**



**AKARA Grand Ballroom**



**1<sup>st</sup> Floor : THALANG Meeting Room 1/2/3**

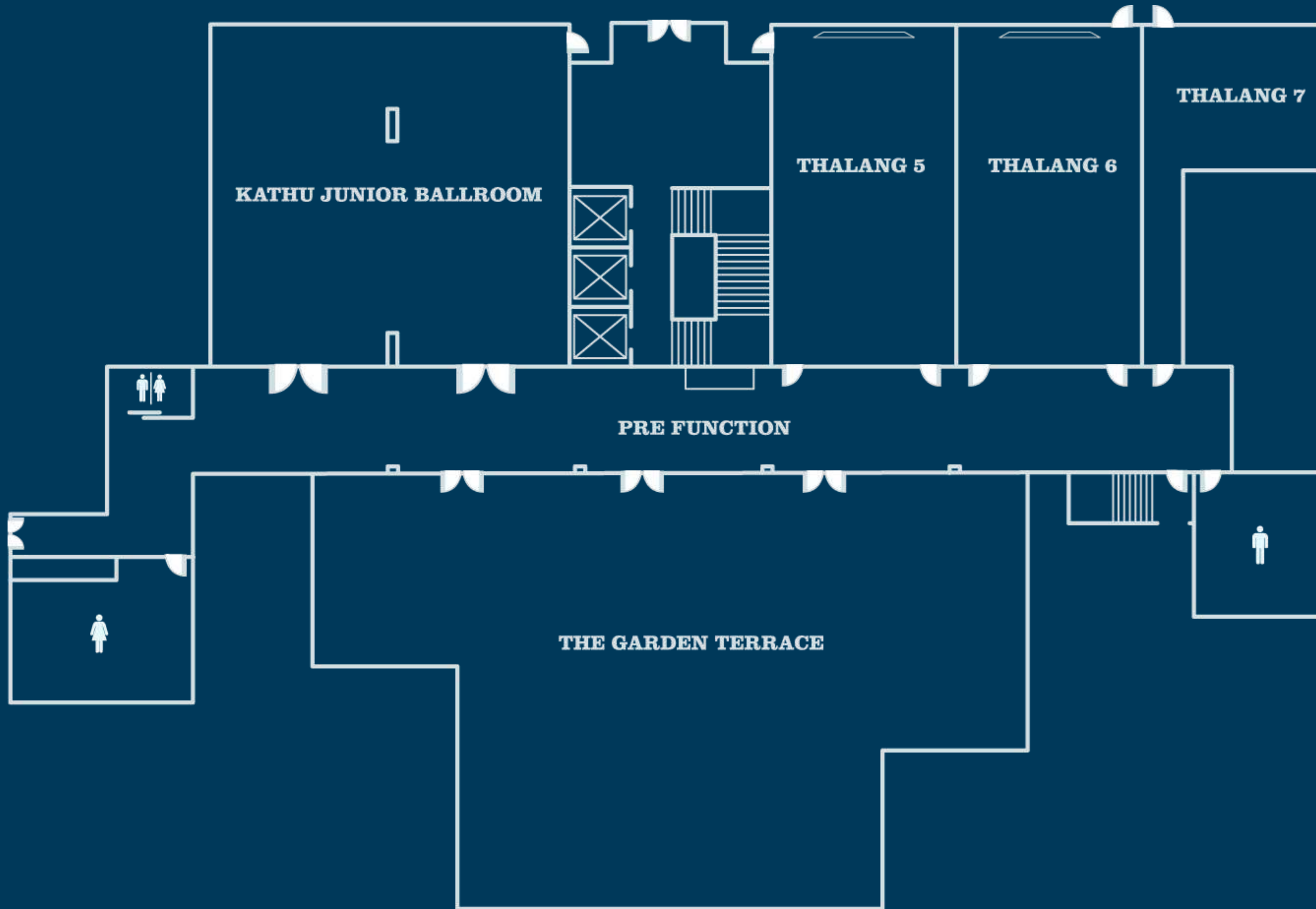


**AKARA Grand Ballroom Foyer**



**Thalang – Breakout Room**

# FLOOR PLAN





## 5 RESTAURANTS & BAR

- Chao Leh Kitchen / Capacity: 257
- Sears & Co. / Capacity: 120
- The Deck Beach Club Patong / Capacity: 136
- Lobby Bar / Capacity: 32
- Pool Bar / Capacity: 102

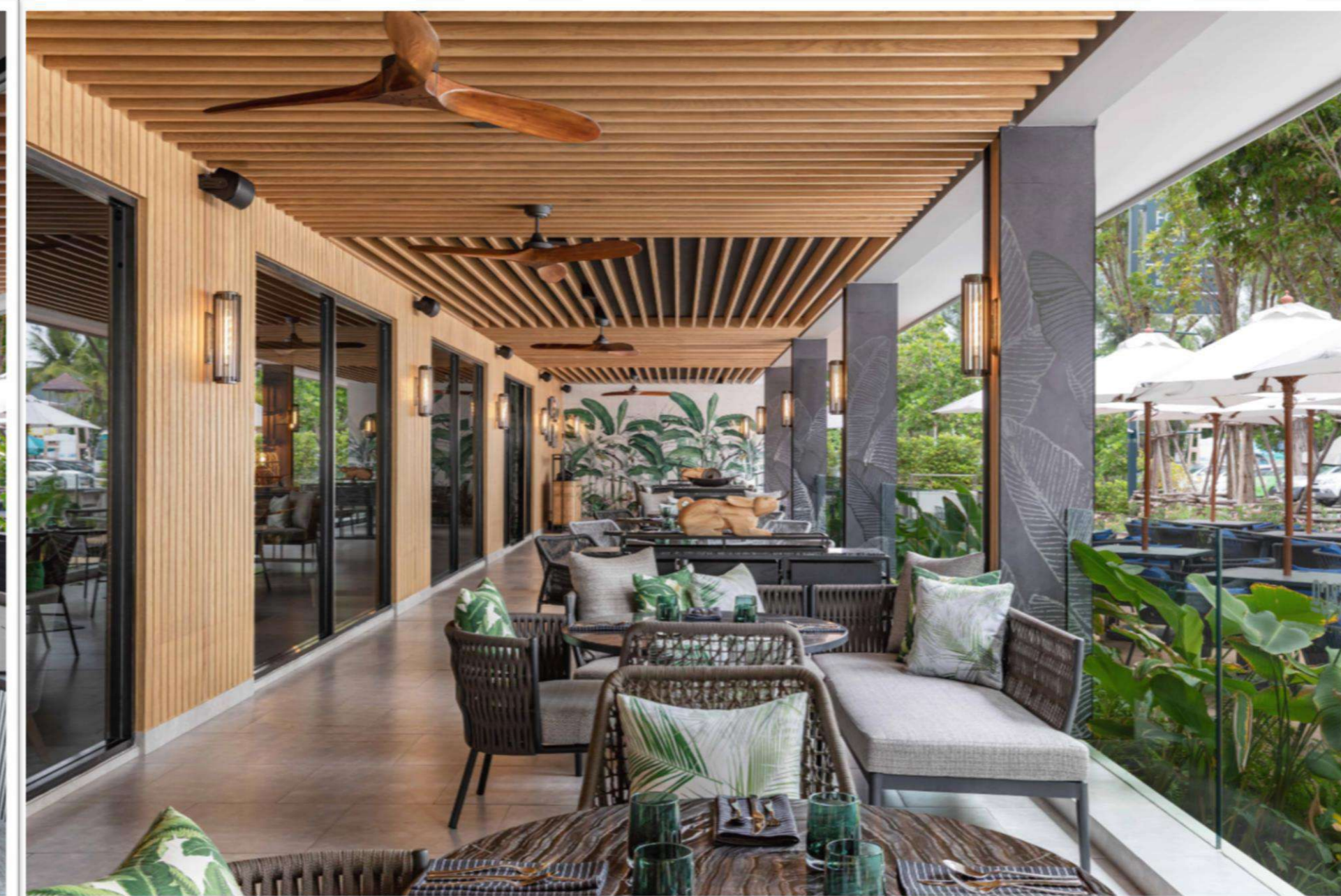
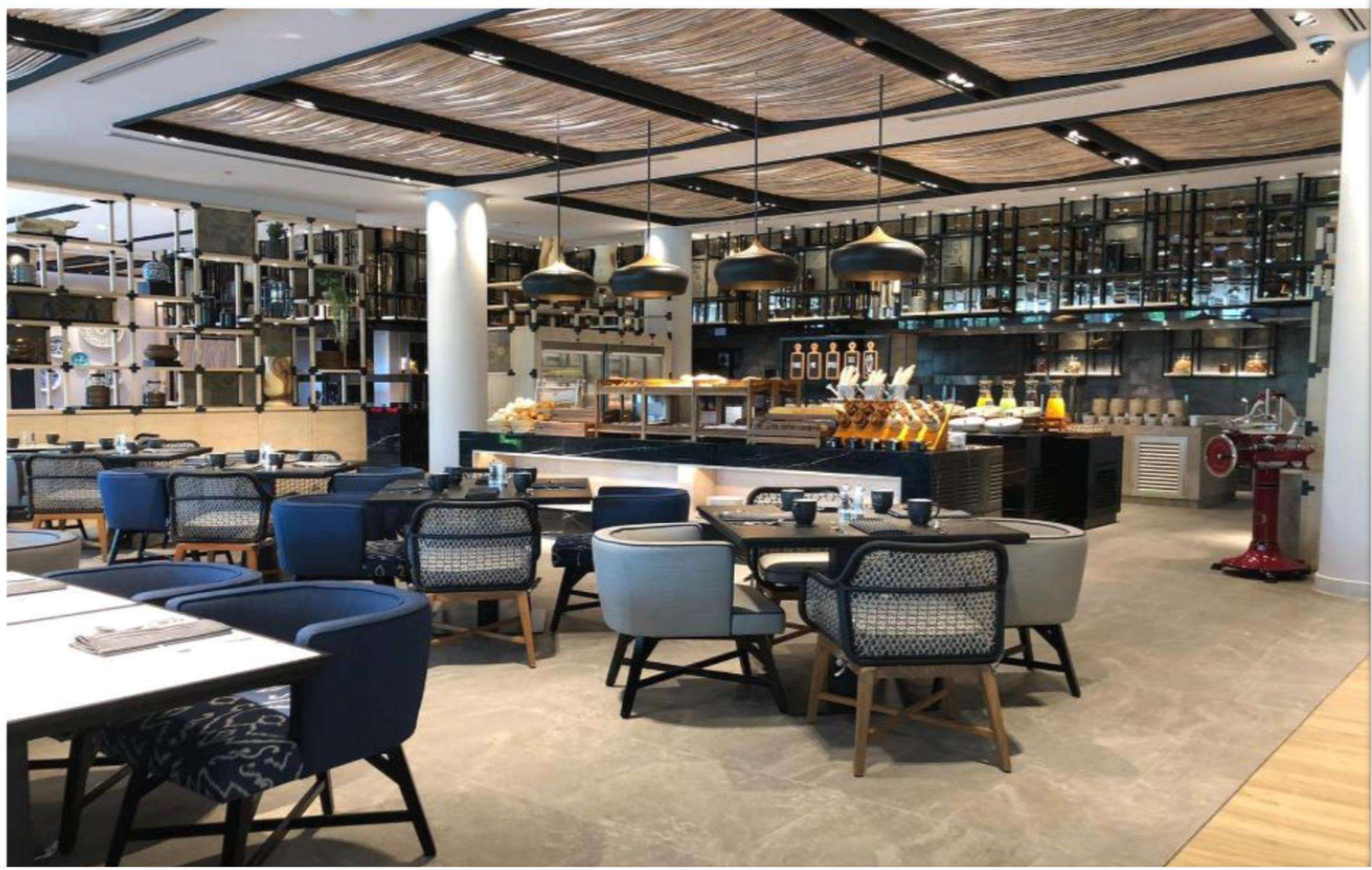
# RESTAURANTS

FOUR  
POINTS  
BY SHERATON

Phuket  
Patong Beach Resort

## CHAO LEH KITCHEN

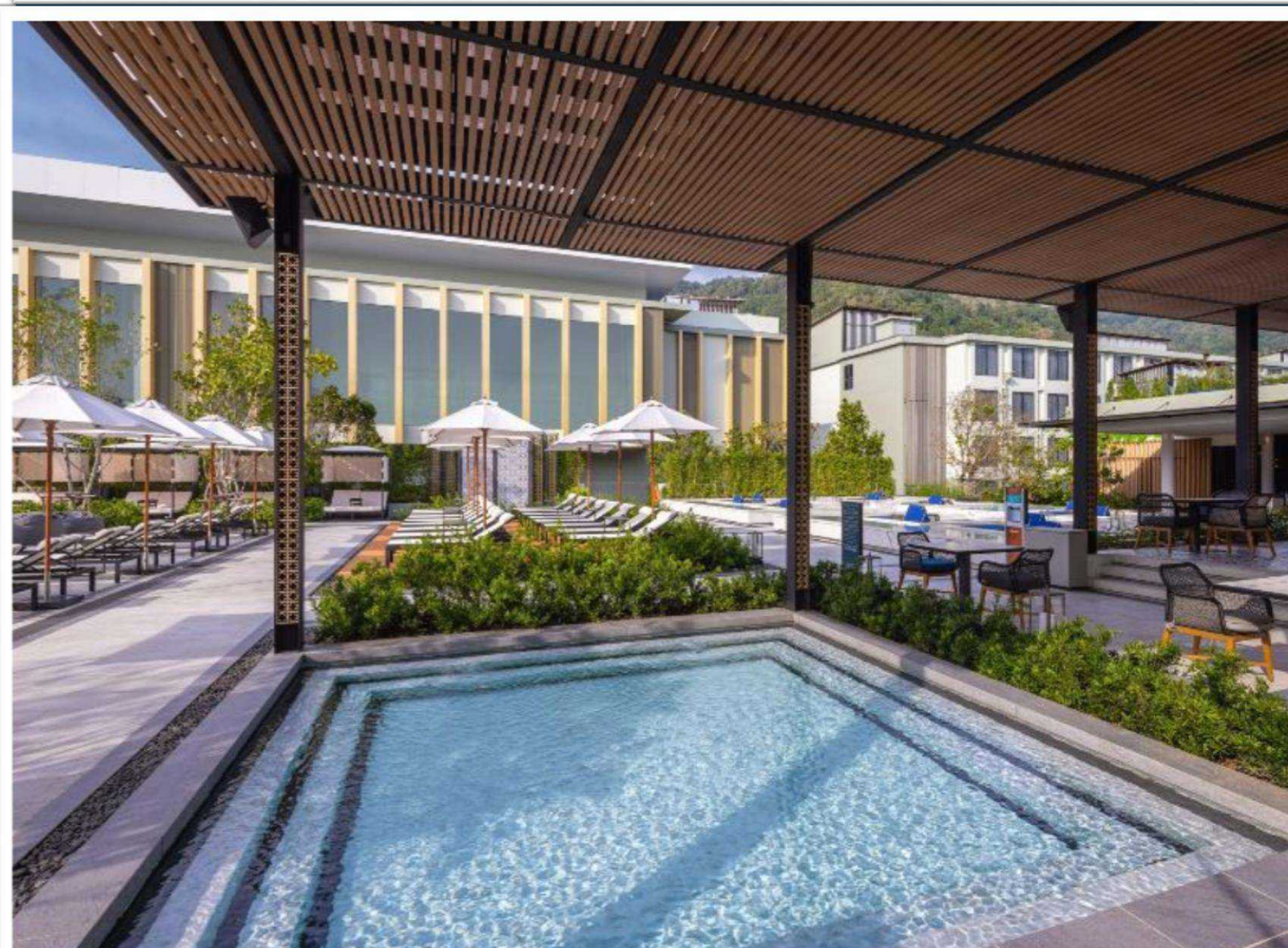
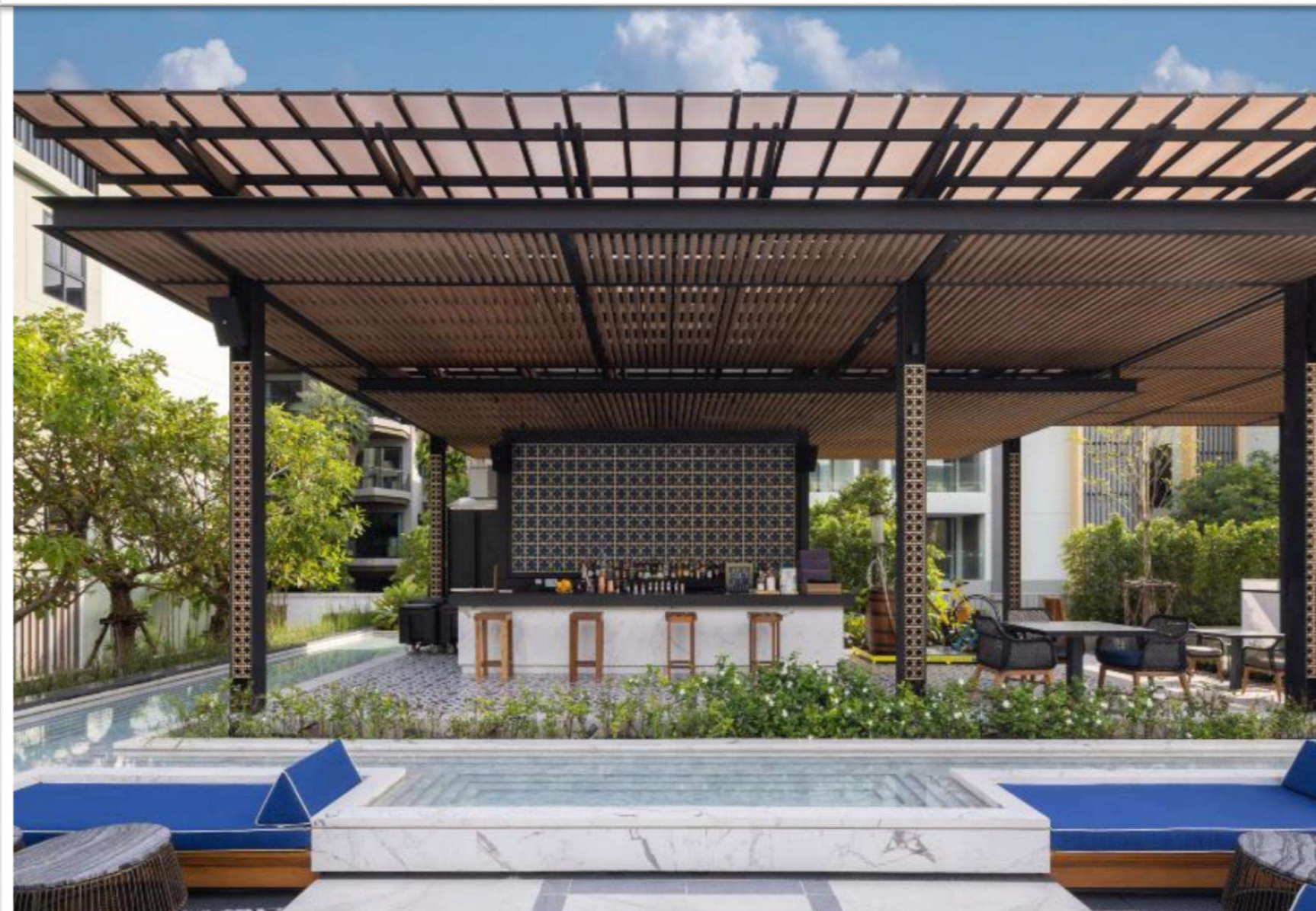
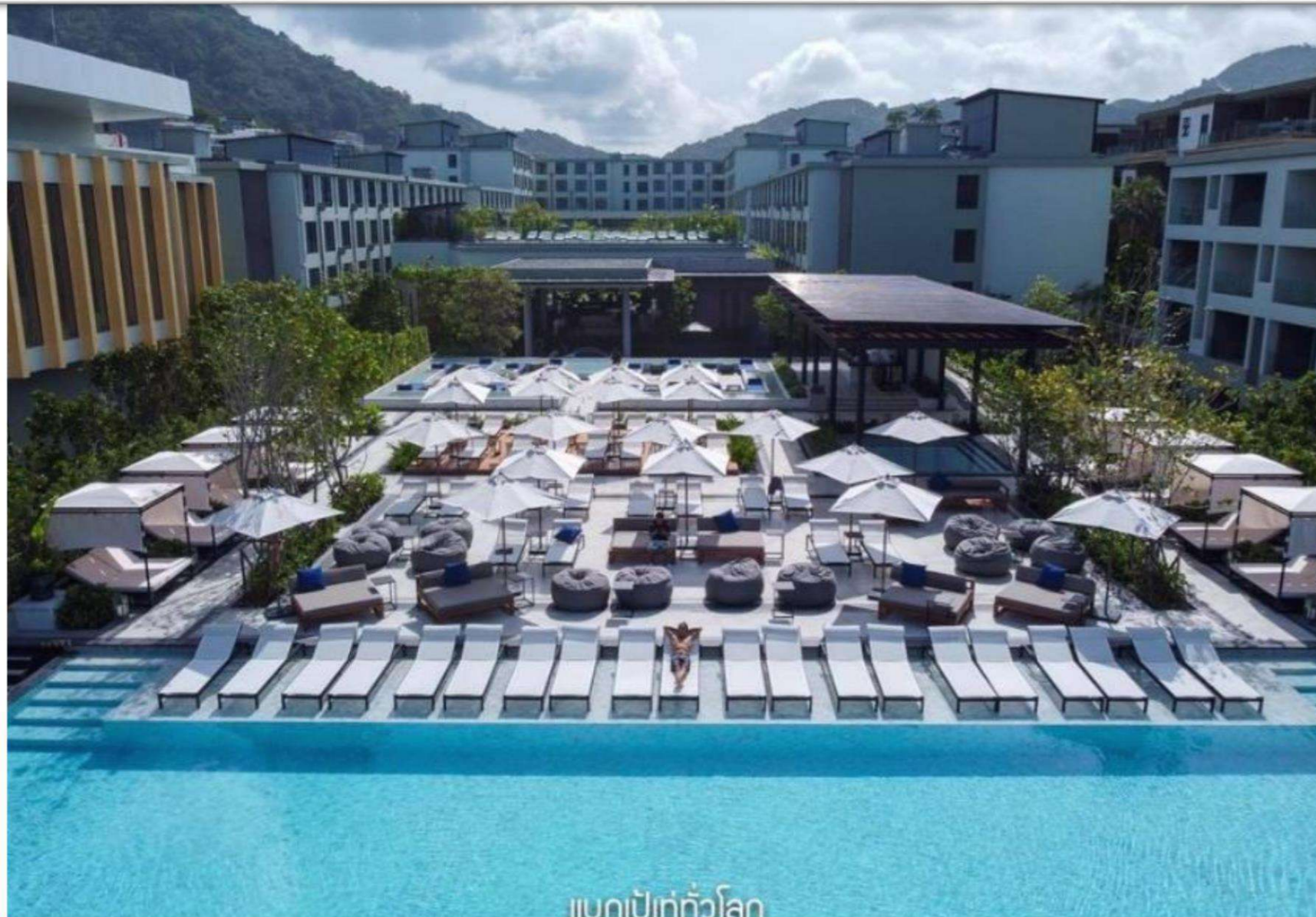
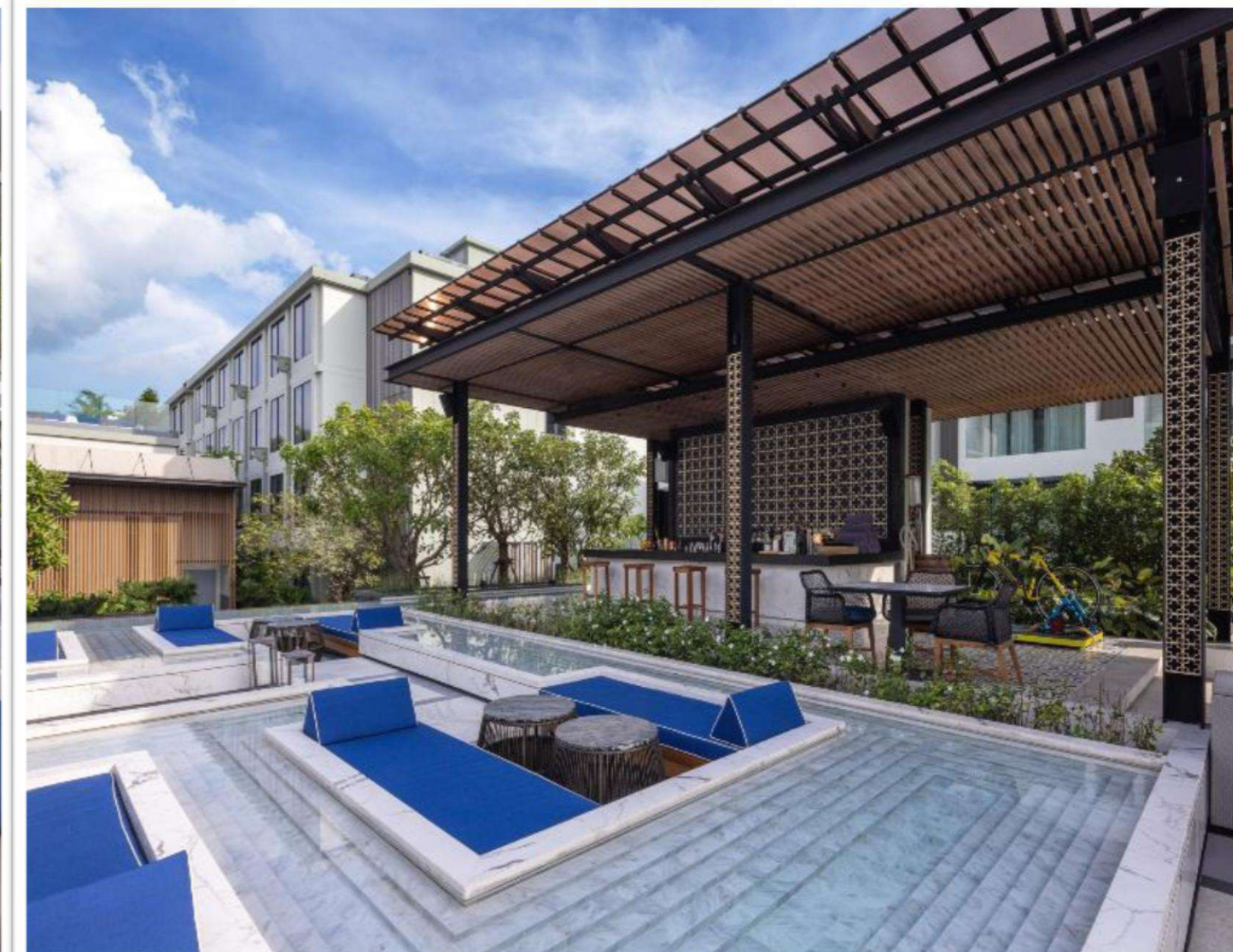
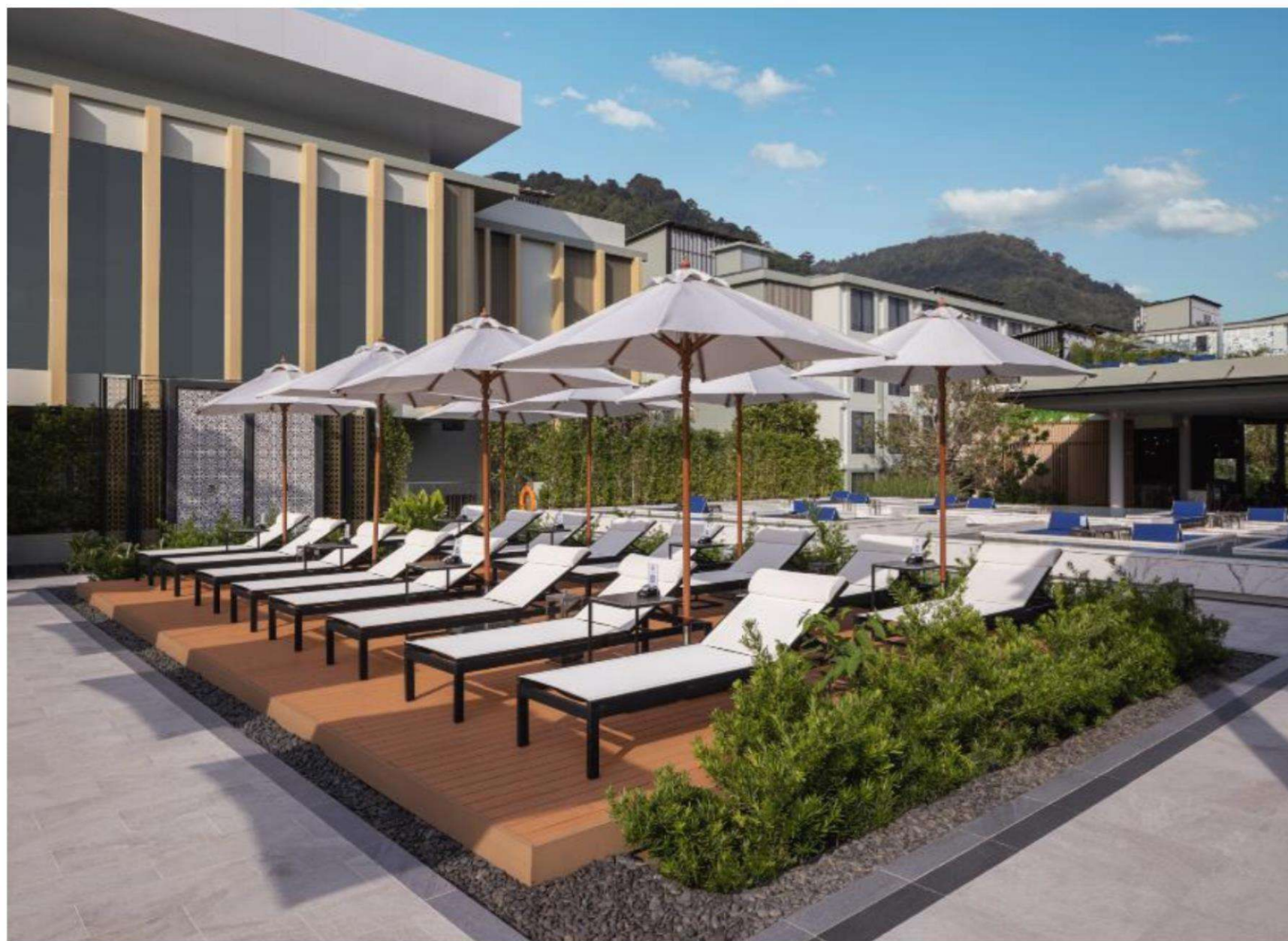
All Day Dining



## SEARS & CO.

GRILL & BREW

# THE DECK BEACH CLUB PATONG







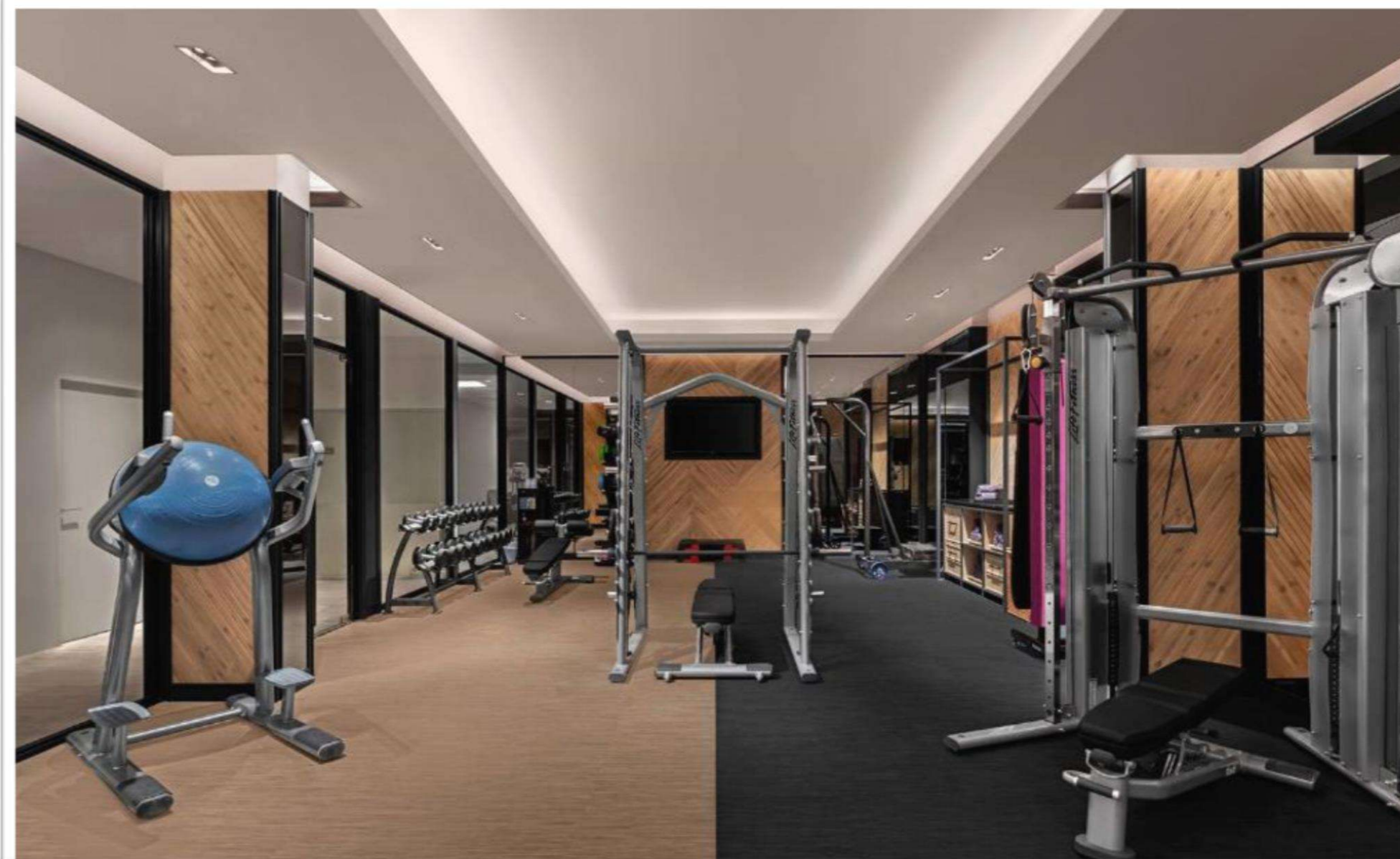
## FACILITIES & SERVICES

- 2 Swimming Pools
- 1 Dedicated Kids Pool
- 24-hrs Gym
- Indoor & Outdoor Kids Club

# HOTEL FACILITIES

FOUR  
POINTS  
BY SHERATON

Phuket  
Patong Beach Resort



THE GYM  
24 HOURS



LITTLE  
SEA GYPSY  
KIDS CLUB

# FUN THINGS YOU CAN DO...

Team Building & Fun activities



Phuket FantaSea



Phi Phi Island and Maya Bay



Nightlife at Patong



Phuket Old Town



Sunset at Promthep Cape



Shopping at Jungceylon



Visit the Big Buddha



Trick Eye Museum



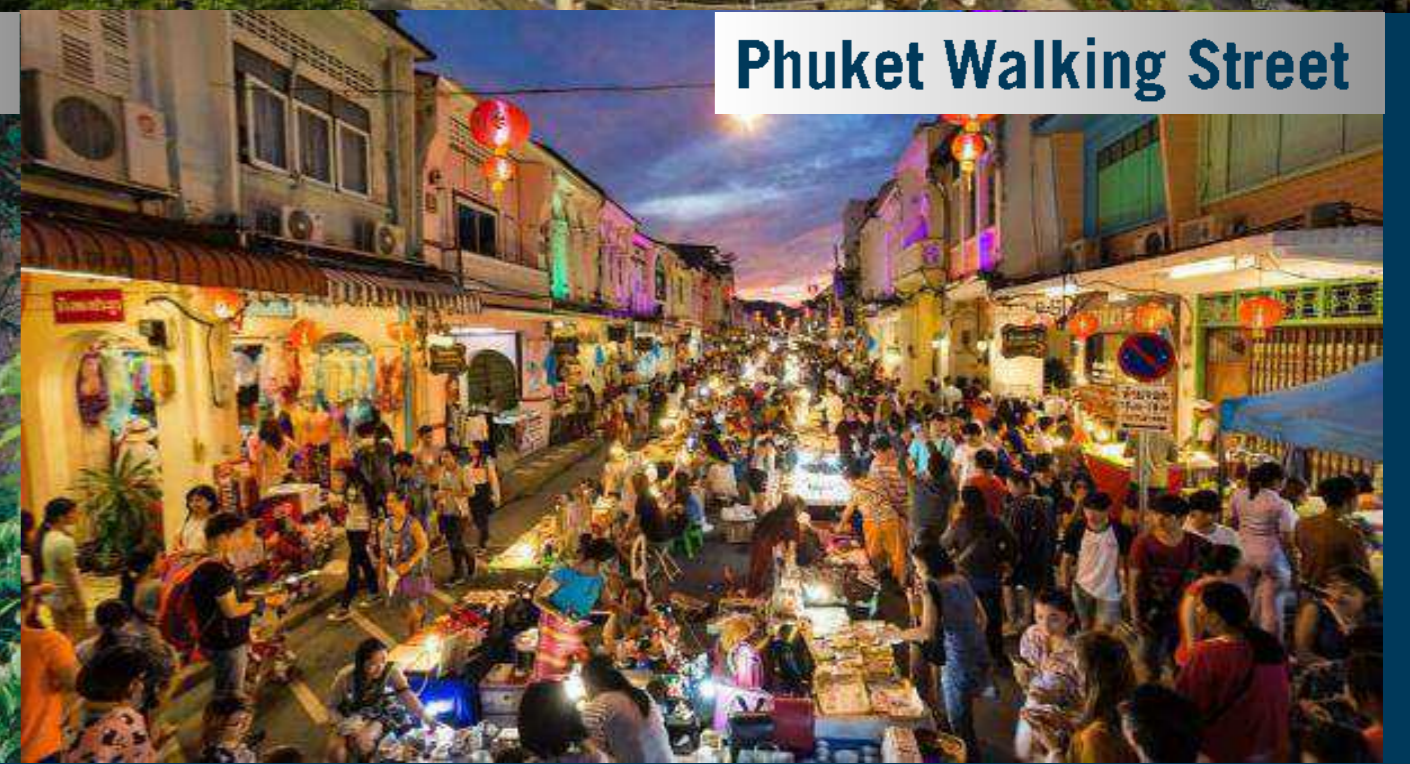
Dim Sum for breakfast



Zipline Adventure



Phuket Walking Street



# MARRIOTT COMMITMENT TO CLEAN & SHA+

FOUR  
POINTS  
BY SHERATON

Phuket  
Patong Beach Resort

## A Longstanding Commitment

At Marriott, we are committed to providing you an environment that aligns with expert protocols for working to defeat COVID-19. Consisting of in-house hotel operations and outside experts on food & beverage hygiene and infection prevention, our **Marriott Cleanliness Council** was formed to redefine our cleanliness standards. We will actively monitor and evolve our solutions to ensure a clean environment for your next meeting or event with us.

<https://marriotteventsasia.com/commitment-to-clean/>

<https://www.thailandsha.com/shalists/index?keyword=Four#detail-1416>



## Our Approach

We're moving from **high-touch to touch-less** through technology, space design, meeting set-up and food & beverage offering. We are introducing **deeper and more frequent cleaning** with extra attention given to high-traffic areas.

## Guest Contact

**Signages** are available to remind guests to maintain **social distancing** protocols. **Reduced seating capabilities** according to the local laws and government regulations. There will be **frequent disinfection of high touched areas**.

## Guest Rooms

**Deep cleaning** will be performed for high-touch areas. **Mobile Check-in** and **Mobile Key** along with **Mobile Chat and guest requests** via Marriott Bonvoy App\* will be used at participating hotels. **Sanitization kit** for guest use will be available.

## Meetings + Events

**Reducing seating capacity** according to the local laws and government regulations. Where possible, **outdoor spaces** will be utilized. We will **enhance our cleaning protocols** to disinfect every meeting space.

## Meals + Breaks

Setting meals and breaks in spaces reserved for the specific event (**no co-mingling with other event guests**). Offering a wide variety of hygienic F+B options tailored to group size, including **Grab & Go, canned + bottled beverages, and plated service**. Redesigning F+B station set-ups to **maintain appropriate distancing**.

# Four Points by Sheraton Phuket Patong Beach Resort

198/8-9 Thawewong Rd. Patong,  
Kathu, Phuket 83150, Thailand

Tel: +66 76 645 999

Fax: +66 76 645 900

[www.fourpointsphuketpatong.com](http://www.fourpointsphuketpatong.com)

Contact me at :



Kwan Kanawattanakul – Sales Manager

[Kwan.K@Marriott.com](mailto:Kwan.K@Marriott.com)

Mobile/Line & WhatsApp : +66 92 291 5987