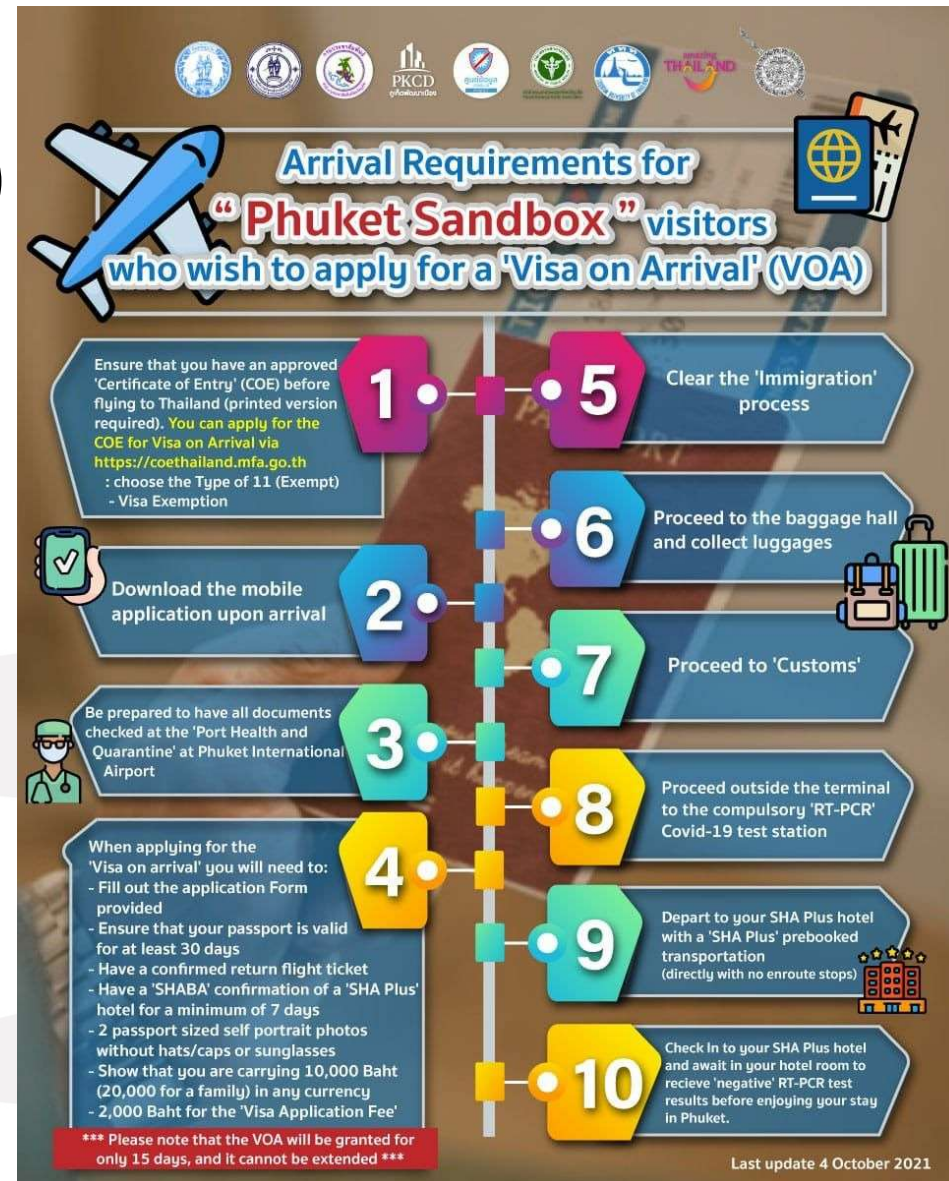


# TRAVEL ESSENTIALS

## (Sandbox Program – Visa on Arrival)

1. COE printed version. Apply on <https://coethailand.mfa.go.th> . Chose type 11 (exempt) – Visa Exemption.
2. Download Mobile App on arrival.
3. Be prepared to have the documentation checked at Phuket Airport.
4. VOA will only be granted for 15 days and is not extendable.
5. Clear Immigration.
6. Proceed to baggage hall and collect luggage.
7. Proceed to customs.
8. Proceed outside the terminal to the compulsory RT-PCR Covid-19 test station.
9. Depart to your SHA+ Hotel with prebooked transportation (No stops en-route)
10. Check in and wait in your hotel room to received the negative RT-PCR test result before you head out to enjoy your stay in Phuket.



# TRAVEL ESSENTIALS

## (Sandbox Program – Visa on Arrival)

DOCUMENTS you will need for VOA:

1. Fill out the application form provided.
2. Ensure that your passport is valid for at least 30 days.
3. Have a confirmed return flight ticket.
4. Have a SHABA confirmation of an SHA+ Hotel for a minimum of 7 days. This is available when booking on [www.travelbullz.com](http://www.travelbullz.com)
5. 2 passport sized self portrait photos without hats/caps or sunglasses.
6. Show that you are carrying 10,000 Baht (20,000 for a family) in any currency.
7. 2,000 Baht for the visa application fee.

